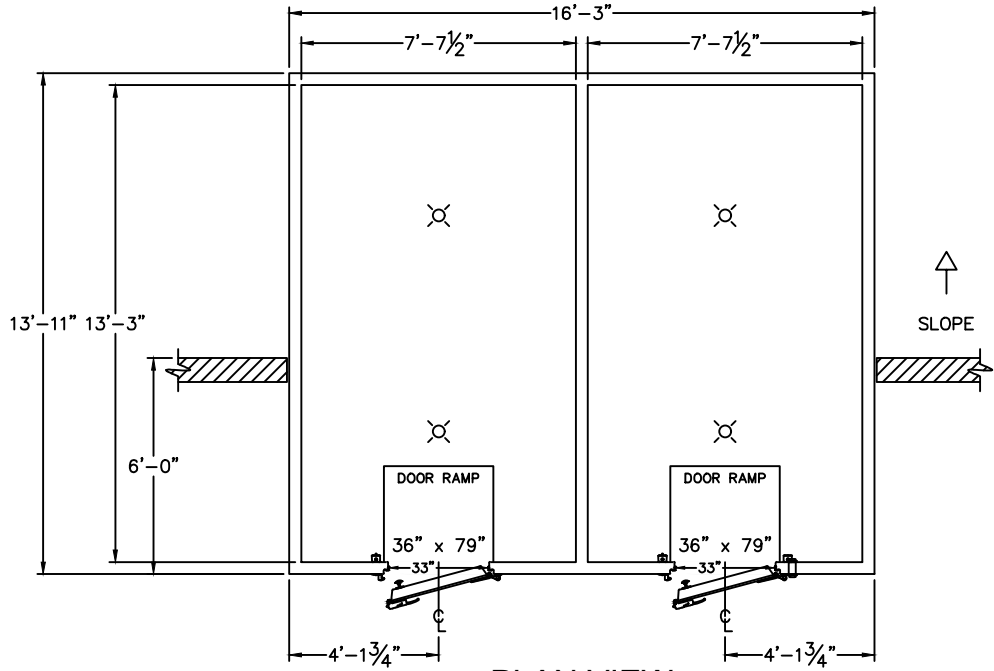


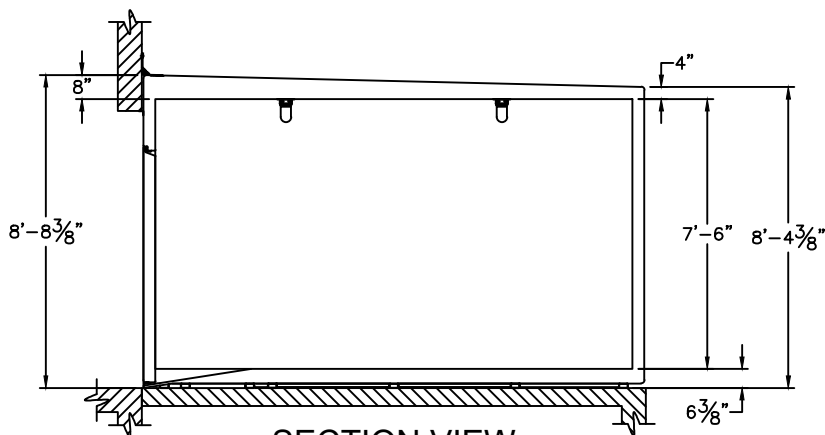
ROOM TEMP.:
35°F
 INTERIOR AREA:
101 sq. ft.
 HORSEPOWER:
—
 REFRIGERANT:
—
 ELEC. SUPPLY
115/208-230
 PHASE:
Three
 CYCLE:
60 hz.
 AMPERAGE:
—

ROOM TEMP.:
0°F
 INTERIOR AREA:
101 sq. ft.
 HORSEPOWER:
—
 REFRIGERANT:
—
 ELEC. SUPPLY
115/208-230
 PHASE:
Three
 CYCLE:
60 hz.
 AMPERAGE:
—



PLAN VIEW

- 4" WALLS
- 4" SLOPED ROOF
- 1/2" STANDARD DUTY FLOOR
- (2) SPRING HINGES
- (2) INTERIOR RAMPS



SECTION VIEW

DRAWING APPROVAL

PLEASE INDICATE YOUR APPROVAL OF THIS DESIGN, THE DIMENSIONS, DOOR LOCATION/SWING, ELECTRICAL REQUIREMENTS, AND EQUIPMENT LOCATIONS BY SIGNING BELOW AND RETURNING TO POLAR KING.

DATE: _____ BY: _____

A95031261

DRAWN BY: RLM MODEL NO.: DD1416 SCALE: 3/16" = 1' DATE: 6/8/20

DRAWING NAME: A95031261 DD1416



POLAR KING
INTERNATIONAL, INC.
FORT WAYNE, INDIANA 1-800-752-7178

THE REFRIGERATION SYSTEM SHOWN IS DESIGNED TO MAINTAIN INDICATED TEMPERATURE IF PRODUCT ENTERS WITHIN 10°F OF FINAL HOLDING TEMPERATURE. PLEASE CONTACT YOUR SALES REP IF INCOMING PRODUCT WILL BE ENTERING AT HIGHER TEMPERATURES. REFRIGERATION DESIGN IS SUBJECT TO CHANGE FOR IMPROVEMENTS. ALL DIMENSIONS ARE NOMINAL. FINAL DIMENSIONS WILL BE ±1 INCH OF DRAWING DIMENSIONS. CONTACT YOUR SALES REP IF TIGHTER TOLERANCES ARE REQUIRED.